



DIAGNOSTIKI ATHINON

Clinical & Research Laboratory

Sampling Instructions
for Male Urinary Tract System Microbiome Testing
with AndroScan®

1

Sampling Instructions for Male Urinary Tract System Microbiome Testing with AndroScan®

Before you begin

- Carefully check the contents of the kit. If any of the contents is missing, please contact us.
- With this collection kit, you can collect a specimen for all AndroScan® testing options, such as Comprehensive, UMC, TNC as well as AndroScan® 5 & 6.



Important Note: Read all instructions before starting

2

Each Collection Kit contains

Sampling instructions

Requisition form

Collection tubes for urine and sperm samples

Plastic transfer pipettes

Unbreakable case with absorbent material SpeciSafe®

Sticker labels

Plastic bag marked "Biohazard"

Ice pack

Cardboard packaging box

Return envelope

DHL return form

(only in case of shipment outside Greece)

Notice! You will need to buy 2 simple sterile urine cups **from the pharmacy**. These cups are **not** included in this collection kit.

Important information before you begin your collection

You must not have sexual intercourse for 24 hours prior collecting the sample.

If you are taking any **antibiotics**, you should finish your treatment and wait at least 7 days after the last dose of the medicine prior collecting the sample.

Do not stop your scheduled medication unless there is a specific medical prescription.

Place the ice pack in the freezer (-20°C) for at least 8 to 10 hours before shipping the sample.

Collection tips

- Place the contents of the collection kit on a clean surface.
- AndroScan® will require two different samples to be collected. A **urine** sample and a **semen** sample. Samples should be collected in 2 different simple, sterile urine cups that you will purchase from the pharmacy.
- Wash your hands and the entire genital area with soap and water (avoid disinfectant / antiseptic soaps) to reduce the chance of contamination.

How to fill the test Requisition form

Fill in the requisition form provided in the kit with all the required information.

Do not forget to write down the required tests and sign it.
Please provide us the name, the phone number, and the e-mail of your doctor, therefore we can inform him / her about your results.

Marking the sample

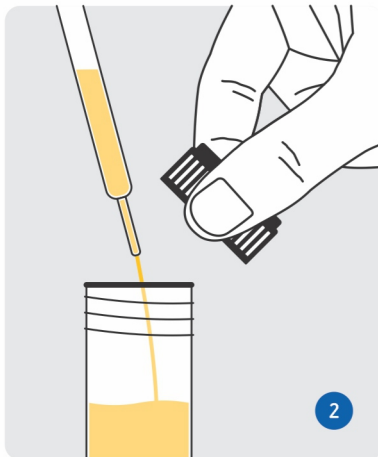
Using a blue or black pen, record your **Name** and **Surname** as well as the **Date of collection** on the labels provided with the kit. Do not use a pencil or simple marker as they may fade.

5

Sampling Instructions - Urine collection



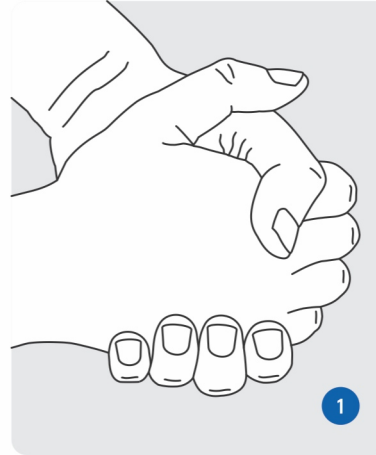
The first morning urine should be collected on the same day with the semen sampling. Urination **should begin** in the collection cup. Fill the urine cup to about 1/3 of its volume. Finish urination in the toilet bowl.



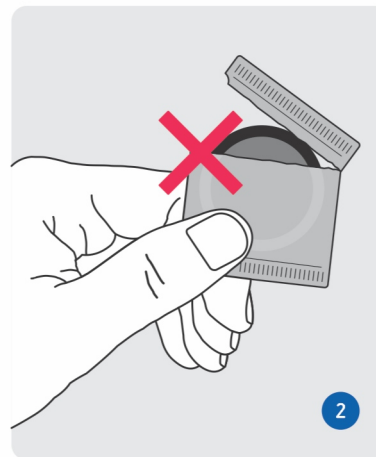
After urine collection, transfer a few milliliters of the urine to the first collection tube (about 1/2 of its volume) with the help of the first transfer pipette.

6

Sampling Instructions - Sperm collection



Wash your hands and the entire genital area with soap and water. The sample is taken by masturbation. Although help from your partner is possible, avoid any contact with the mouth or vagina. Also avoid creams or lubricants.

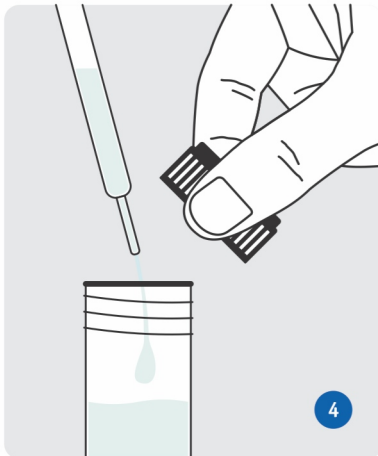


Do not use a condom. Condoms contain chemicals that may adversely affect the results.

7



Collect the entire amount of semen in the sterile cup and close the lid immediately to reduce the chance of contamination.



After sperm collection wait about 10 - 15 minutes for sperm to liquify and transfer all the sperm to the second collection tube with the help of the second transfer pipette.

8

Ship the sample to the lab

The samples must arrive at Diagnostiki Athinon on working days.

Send the samples immediately after collection.

Do not send the samples on Fridays or the day before public holidays.

Schedule the samples collection Monday through Thursday and ship them to the lab on the same day.

Place the tubes to the special unbreakable case (SpeciSafe®) and carefully close the lid of the case. Insert the SpeciSafe® case into the plastic bag marked "Biohazard" and close it, removing the protective cover of the adhesive tape.

Place the bag and the frozen ice pack in the carton box and close it. Insert the cardboard packaging box into the return envelope.

Call the local **ACS Courier** representative and send the sample to Diagnostiki Athinon, at the **recipient's expense**.

If you are **outside Greece**, call your local **DHL** representative and use the **DHL return form**.


Receiving the results

The results will be sent to you the way you chose, approximately in 2 - 10 days after receiving the sample and depending on the type of tests required.



DIAGNOSTIKI ATHINON

Clinical & Research Laboratory

 6 Mesogeion Avenue, Ampelokipoi 115 27, Athens

 +30 210 7777654 / +30 210 7774569

 info@athenslab.gr

 eshop.athenslab.gr

 athenslab.gr